

EDI Pros

Solid software with a clear future

Mailbox Analyzer™ *Professional*



User's Guide

MAILBOX ANALYZER™ SIGNATURE

User's Guide

© Copyright EDI Pros, Inc. 2005
238 Capitol Street • Salinas • CA • 93908
Phone 831.753.2352 • Fax 831.753.7762

Table of Contents

Introduction	i	Scheduler Entry Parameters	10
CHAPTER 1		Last Submission Details	12
Prerequisites	1	Alert Action Setup	13
<hr/>			
CHAPTER 2		Alert Action Parameters	16
Installation	2	Batch Summary Display	18
<hr/>			
CHAPTER 3		Batch Detail Display	20
Quick Start	3	Mailbox Analyzer Setup	22
<hr/>			
Main Menu	3	Mailbox Analyzer Setup	24
Mailbox Analyzer Setup	3	Do-not-check List	26
Scheduler Setup	4	Application Program Setup	28
Alert Action Setup	4	Application Parameters Setup	28
Testing	4	Application Program Setup	28
<hr/>			
CHAPTER 4		Message Master Maintenance	28
Reference	5	Batch Purge Requestor	29
<hr/>			
Scheduler Setup	6	Calling Mailbox Analyzer from other apps	31
APPENDIX A			
<hr/>			
Special Notices			32

Introduction

Mailbox Analyzer™ will play a key role on your iSeries.

Mailbox Analyzer™ *Signature* is a powerful tool that allows you to schedule an automated custom analysis of your TrustedLink iSeries/400 mail. Mailbox Analyzer is powered by The Supervisor®, which includes:

- An intuitive tool for scheduling when Mailbox Analyzer will run.
- Flexible alert action setup for alerting key personnel when Mailbox Analyzer finds an unwanted condition.
- A comprehensive batch summary display for keeping a history of Mailbox Analyzer results.



Prerequisites

Prerequisites for Mailbox Analyzer to run properly.

Before installing Mailbox Analyzer, be sure the following prerequisites have been met.

1. Your AS/400 or iSeries is at an OS level of V5R1 or higher.
2. You have TrustedLink iSeries/400 (any version) installed on your AS/400 or iSeries.

Installation

Installing Mailbox Analyzer on your iSeries.

Installing Mailbox Analyzer onto your iSeries is simple. Follow these steps to complete the CD installation. Installation instructions for downloading may be found on our website at <http://www.edipros.net/downloads>.

1. Insert the CD-ROM into the optical device on your AS/400 or iSeries.
2. Sign on as QSECOFR.
3. At a command line, type the command **LODRUN DEV(*OPT)** and press ENTER.

After a short delay, the product install screen will appear.

4. Follow the instructions provided during installation.

The install process can be cancelled by pressing F3.

5. Press the F19 key (shift + F7) to begin the install process.

During the install process various prompts may appear, such as the creation of new libraries verification prompt, object ownership verification prompt and a duplicate object notification prompt. If you receive any prompts and do not want to proceed with the install process, press F12 from the prompt screen to restart the install.

An information message appears when the install process has completed.

Product Installation is now complete

Quick Start

After installing Mailbox Analyzer™, getting up and running is a snap.

With a little help from The Supervisor®, you can have Mailbox Analyzer running within minutes. Here's how.

Main Menu

Ensure that the libraries entered during installation are in your library list. This can be verified by typing "DSPLIBL" on a command line. To add the libraries, type "EDTLIBL" on a command line and enter the new libraries. See your iSeries administrator for further assistance and for adding the libraries permanently to your library list. Enter the main menu of The Supervisor® by typing "CALL SUPERV" or "SUPER" at a command line. See your iSeries administrator for adding this as an option to your main business application.

Mailbox Analyzer Setup

From the main menu, select option **20. Mailbox Analyzer Setup**. Enter option 5 next to the default mailbox analyzer. If an error appears, then the library is incorrect. Enter the correct database library with an option 2 in the Opt column and press Enter. Then try the option 5 again. If all the settings on the setup screen are correct, then press F3 to exit. If you would like to create a custom mailbox analyzer, go back to the mailbox analyzers and use option 3 to copy the default analyzer. Rename the new mailbox analyzer and provide a new description and library if necessary. Use option 5 to set up the new values.

Scheduler Setup

From the main menu, select option **1. Scheduler Setup**. To add an entry, press F6. From the App. Name field, press F4 and select Mailbox Analyzer from the pop-up window. Enter the time, and enter an “X” for every day you want Mailbox Analyzer to run at the entered time. Enter a user profile that has a job description that includes Mailbox Analyzer’s libraries in its library list. Or enter the qualifying job description to override the user profile’s job description. If desired, enter the job queue that Mailbox Analyzer should be submitted to when run. Press Enter. In the parameters pop-up window, press F4 to select a mailbox analyzer to run for the schedule entry. Select the mailbox analyzer. If left blank, the default mailbox analyzer will be run. Press Enter to save the parameter and press F12 to close the window. Now press Enter to verify the schedule entry addition.

Alert Action Setup

From the main menu, select option **2. Alert Action Setup**. To add an entry, press F6. From the App. Name field, press F4 and select Mailbox Analyzer from the pop-up window. Enter a message severity of 20. Position the cursor to the Action field, press F4 and select an alert action. Enter the appropriate recipient in the format that matches the type of alert action entered. Press Enter. In the parameters pop-up window, press F12 to close the window. Now press Enter to verify the alert action entry addition.

Testing

From the main menu, select option **1. Scheduler Setup**. Enter option 1 to immediately submit the schedule entry to batch. From the main menu, select option **3. Batch Summary Display**. Enter option 5 to view the batch detail. If there were any errors, they will be listed in the batch detail with a high severity. The error messages should provide enough detail to troubleshoot the problem.

Reference

The following Reference section provides detailed information about every menu option available in Mailbox Analyzer™ Signature. Use this section to fine-tune your understanding of Mailbox Analyzer.

Review the following reference information to learn about every option available in Mailbox Analyzer. All the reference information is available in the help text by pressing F1 on any screen in Mailbox Analyzer.

Scheduler Setup

```

4/14/05 Scheduler Setup A00AACR002
Application: _____ (Blank for all)

Type options, press ENTER.
1=Run in batch 2=Change 3=Copy 4=Delete 5=Parameters 8=Last Submission
10=Run interactive

  Opt  App. Name  Time  M T W T F S S  Sts  User Prof.  Job Descr.  Job Queue
  ---  -
  [ ]  Mailbox An  05:00:00  X X X X X _ _  A  SUPERVISOR  *USRPRF  *JOB

Bottom

F1=Help F3=Exit F4=Prompt F6=Create F10=Repeat F11=Libraries F12=Previous

The Supervisor®
MA a MW 10/002
  
```

The Scheduler Setup display shows the scheduling information for jobs to be executed using The Supervisor®. Entries are sorted by application code and time. Any entries that have application parameters that are required, but no parameter sets have been entered, will display in red. Entering this display causes a check to take place to ensure that the SUPERVISOR subsystem is active. If it is not active, it is started.

It is important to note that the user profile's job description (when Job Descr. is *USRPRF) or the Job Descr. entered includes the libraries where The Supervisor resides in its library list.

From this display you can

- View scheduled job information
- Create scheduled jobs
- Change scheduled job information
- Delete scheduled job entries
- Enter specific application parameter values
- View the last submitted information

REFERENCE

- Submit a job immediately
- Run a job interactively

Options

- 1 Submit a job immediately to the job queue that is specified on the schedule entry.
- 2 Change the days, status, user profile, job description or job queue of the schedule entry.
- 3 Copy the values from an existing job schedule entry and create a new job schedule entry.
- 4 Delete an existing job schedule entry.
- 5 View, add, change or delete application parameter values for the selected job schedule entry.
- 8 View the last submitted information of the job schedule entry.
- 9 Refresh the job schedule information.
- 10 Execute a job interactively. Note that jobs being executed interactively utilize the current user's user profile, job description and job queue instead of the scheduled entry's values.

Function Keys

- F1 Help
- F3 Exit program
- F4 Prompt for values
- F6 Create new schedule entries
- F10 Enter option and press F10 to repeat the option
- F11 Show job description and job queue libraries
- F12 Close the subfile of data or exit the program

HEADER
FIELDS

Application

The logs may be subset by an application by entering the application name or by pressing F4 and selecting an application. Leave blank to display all.

DETAIL
FIELDS

Opt
Enter an option here (see "Options").

App. Name
Name of application to be processed. Press F4 to select an application while creating a new schedule entry.

Time
Enter military time with or without the colons for the schedule entry job to be submitted.

MTWTFSS (X, Blank)
Days of the week, Monday through Sunday. Enter an "X" for each day the schedule entry should be submitted.

Sts (A, I)
Activates or deactivates a schedule entry. Enter "A" for active or "I" for inactive.

User Prof.
Enter a valid user profile. The schedule entry job will run under the user profile entered. The reports will be created using the user profile entered.

Job Descr. (Name, *USRPRF)
Enter either a valid job description or "*USRPRF". When a job description is entered, the environment of the job description will be used for the schedule entry job as it is processing. If the location of the job description is not in the user profile's library list, press F11 to enter the library name. When *USRPRF is entered, the job description in the user profile field is used as the job description of the submitted job.

Job Queue (Name, *JOBQ)
Enter either a valid job queue or "*JOBQ". When a job queue is entered, the schedule entry job is placed in the job queue. If the location of the job queue is not in the user profile's library list, press F11 to enter the library name. When *JOBQ is entered, the schedule entry job is placed in the job queue named in the specified job description.

Notes about the
SUPERVISOR
Subsystem

The SUPERVISOR subsystem is started by a QSYSWRK Autostart Job Entry called "STRSUPER", using job description STRSUPRSBS, which runs the following command:

STRSBS SBSD(<library>/SUPERVISOR)

The SUPERVISOR subsystem has an Autostart Job Entry called "SCHEDULER", using job description SUPERVISOR, which runs the following command:

CALL A00SCDPG01

Every 60 seconds, the SCHEDULER job checks the schedule for any schedule entries that need to run.

REFERENCE

If The Supervisor® library is renamed or all the objects are moved to another library, it is important to change the library name in all the objects mentioned above.

The Supervisor® cannot process schedule entries while its library (or some of the objects) is locked (possibly during backup). When this happens, The Supervisor® logs the following QSYSOPR message.

SUPERVISOR: OBJECT(S) LOCKED. CANNOT PROCESS REQUEST(S).

Once the lock is removed, The Supervisor® logs another message.

SUPERVISOR: OBJECT(S) UNLOCKED. PROCESSING CONTINUED.

REFERENCE

F6 Create new parameter set

F12 Close window

F I E L D S

The fields will vary from one application to another. As an example, the fields that display for Mailbox Analyzer (if purchased) are:

Network ID (see "FTP Network Setup")

Enter a valid 2-character network id to communicate with during execution of this parameter set. Press F4 to select a network.

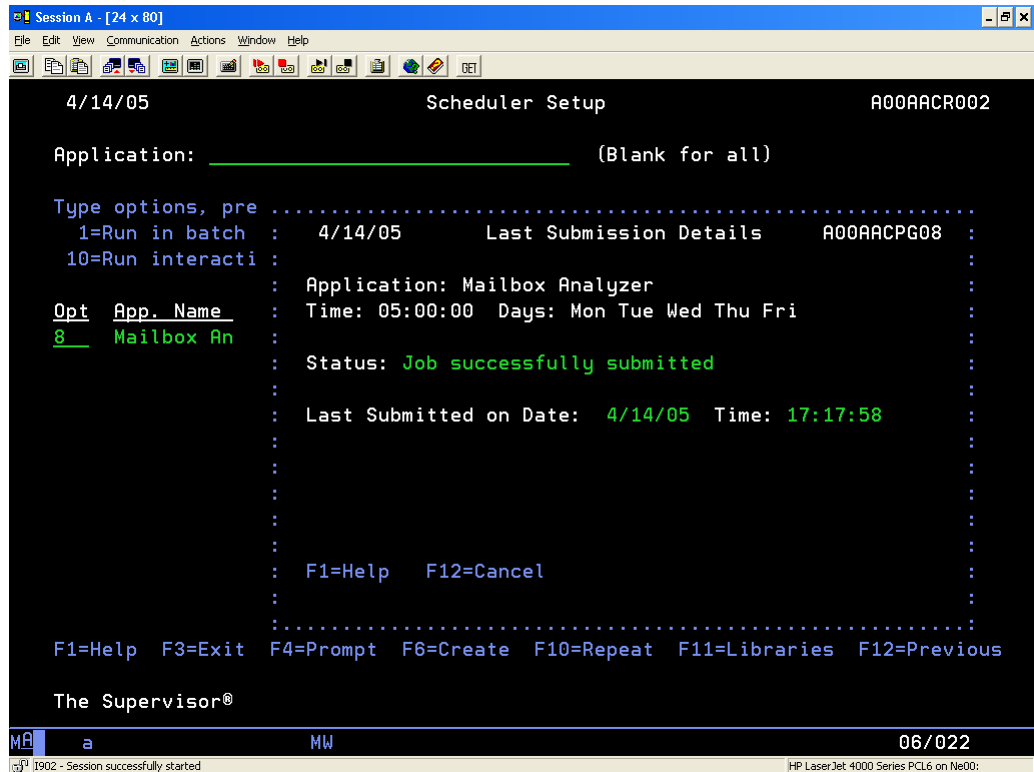
Send? (Y, N)

Enter "Y" for Yes (execute send) or "N" for No (do not execute send).

Receive? (Y, N)

Enter "Y" for Yes (execute receive) or "N" for No (do not execute receive).

Last Submission Details



The Last Submission Details window shows information related to when the particular schedule entry was executed. This includes when the "Run in batch" and "Run interactive" options were used.

From this display you can

- View last submission details

Function Keys

- F1 Help
- F3 Close window
- F12 Close window

FIELDS

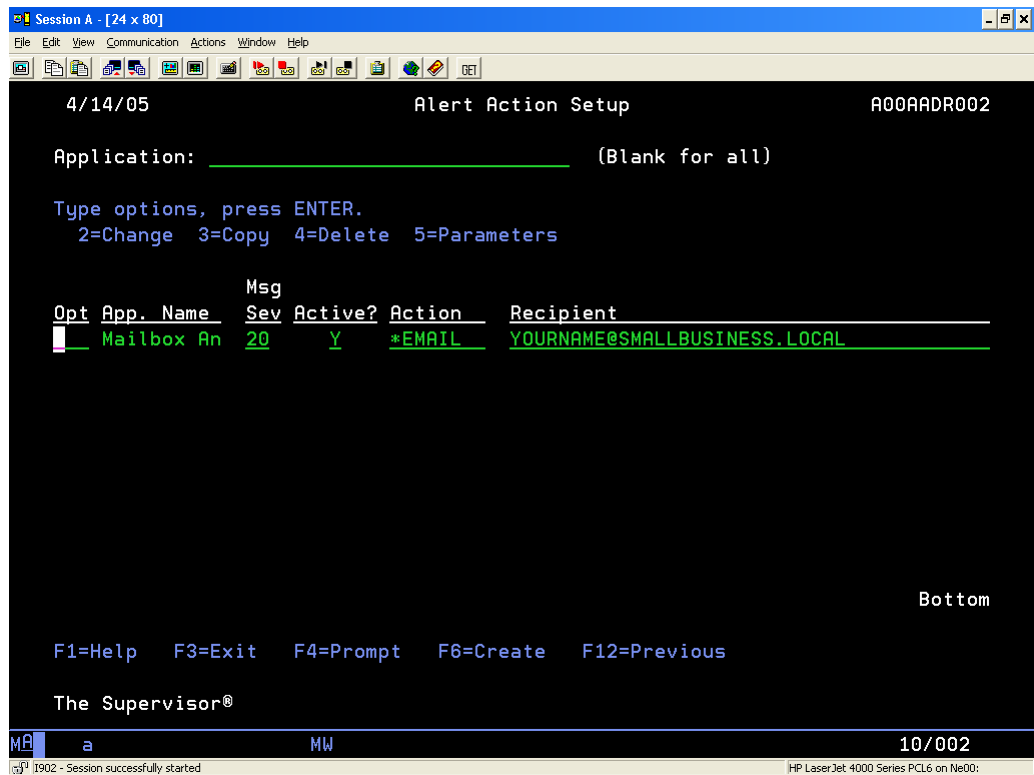
Status

Either "Job not previously submitted" or "Job successfully submitted" will be displayed.

Last Submitted on Date/Time

When the schedule entry was last executed. No values are displayed when the status = "Job not previously submitted".

Alert Action Setup



The Alert Action Setup display allows the creation and maintenance of alert actions. Alert actions are the types of responses that are sent to an individual in the event of a high-severity message while an application is running under the supervision of The Supervisor®. Alert actions are sent upon completion of an application's job. Entries are sorted by application code.

The following alert actions can be sent:

Action	Description	Recipient Type
*BRKINQ	Sends break inquiry message	Workstation
*BRKMSG	Sends break message	Workstation
*BRKMSGU	Sends break message	User
*EMAIL	Sends e-mail ¹ of all messages that meet the message severity criteria	E-mail Address
*MSG	Sends program message	User

¹ Note that the *EMAIL option uses the iSeries' SMTP. Contact IBM for SMTP configuration instructions.

REFERENCE

From this display you can

- View alert action information
- Create new alert actions
- Change alert action information
- Delete alert actions
- Enter specific application parameter values

Options

- 2 Change the message severity, status, action or recipient of the alert action.
- 3 Copy the values from an existing alert action and create a new alert action.
- 4 Delete an existing alert action.
- 5 View, add, change or delete application parameter values for the selected alert action. By entering parameters, the alert action is sent only if the parameters used to submit the job match the alert action parameters.

Function Keys

- F1 Help
- F3 Exit program
- F4 Prompt for values
- F6 Create new alert actions
- F12 Close the subfile of data or exit the program

HEADER
FIELDS

Application

The logs may be subset by an application by entering the application name or by pressing F4 and selecting an application. Leave blank to display all.

DETAIL
FIELDS

Opt

Enter an option here (see "Options").

App. Name

Name of application to be processed. Press F4 to select an application while creating a new alert action.

REFERENCE

Msg Sev (00-99)

Enter the lowest severity of a message that will trigger an alert action. Enter "00" to always receive an alert action. Message severities may be changed in the Message Master Maintenance display.

Active? (Y, N)

Activates or deactivates an alert action. Enter "Y" for active or "N" for inactive.

Action

The type of alert action that is being sent. Press F4 to select an alert action type. Examples are *BRKMSGU and *EMAIL. See alert action list for complete list of alert action types.

Recipient

The recipient of the alert action. The type of recipient is based on the type of alert action. See alert action list for list of recipient types. Note that the values in this field are not validated.

Notes about *EMAIL

*EMAIL utilizes the iSeries SMTP server. For assistance on setting up your iSeries SMTP server, please contact IBM. To modify the from E-Mail address to send Internet E-Mail, use the following command:

```
CHGDTAARA DTAARA(A00EMLDA01) VALUE('<email address>')
```

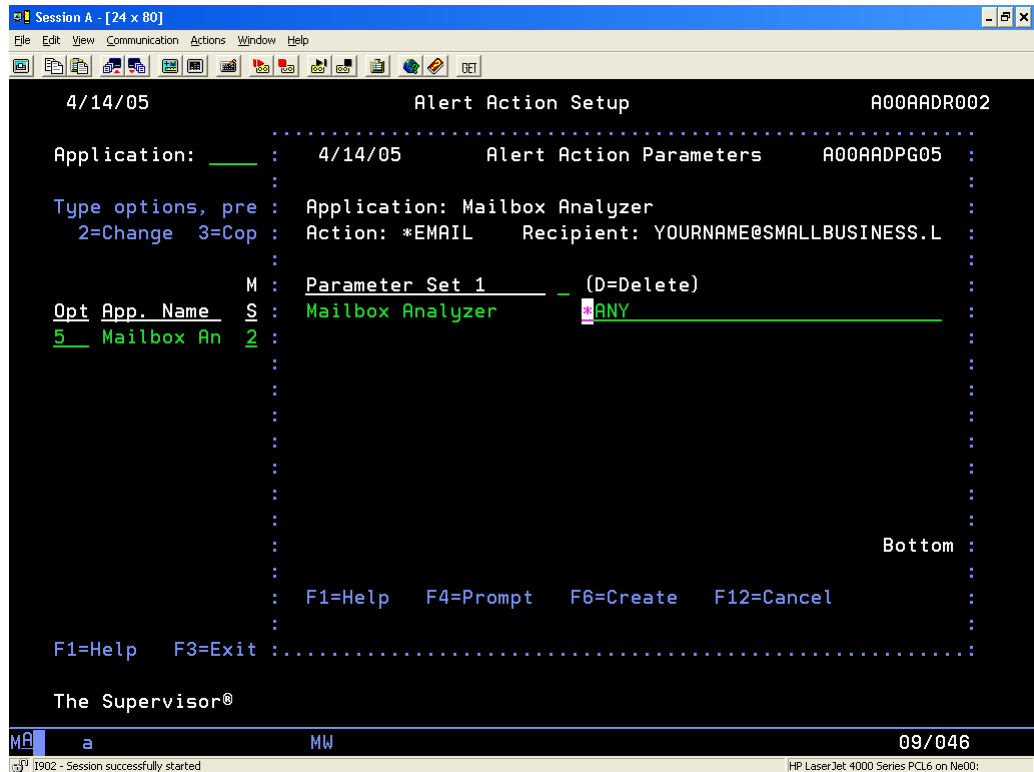
Where <email address> is the from E-Mail address.

*EMAIL also utilizes the time based on the Coordinated universal time offset. be sure the value is correct in order to receive e-mails with the proper timestamp. Pacific Coast is -0800. To change the value, use the following command:

```
CHGSYSVAL SYSVAL(QUTCOFFSET) VALUE('<Offset>')
```

Where <Offset> is the coordinated universal time offset.

Alert Action Parameters



The Alert Action Parameters window shows the values that will be used for filtering when a parameter is sent to an alert action recipient. The alert action parameter values are compared to the parameter values that were used for execution. If there is a match (and the maximum severity had been reached), then the alert action is sent. Multiple parameter sets may be entered for multiple filters.

From this display you can

- View alert action parameters
- Create new parameter sets
- Change values in existing parameter sets
- Delete parameter sets

Options

D Enter a "D" in the field to the left of "(D=Delete)" to delete a parameter set.

Function Keys

F1 Help

F3 Close window

REFERENCE

- F4 Prompt for values
- F6 Create new parameter set
- F12 Close window

FIELDS

The fields will vary from one application to another. The default value of every field is "*ANY". *ANY accepts any value for the field to trigger the alert action. If a field is blank, the execution parameter value must be blank to meet the criteria.

As an example, the fields that display for Mailbox Analyzer (if purchased) are:

Network ID (*ANY, see "FTP Network Setup")

Enter a valid 2-character network id. Press F4 to select a network.

Send? (*ANY, Y, N)

Enter "Y" or "N".

Receive? (*ANY, Y, N)

Enter "Y" or "N".

Batch Summary Display

```

4/14/05                               Batch Summary Display                               R00AER002

Application: Mailbox Analyzer           (Blank for all)
Position To: Batch Date: 99/99/99     Select: Ending Severity: 00 (00 for *All)
Type options, press ENTER.
      5=View Batch Detail

  Opt App. Name  Batch# Date      Time      End  Lv Job Name  Job #  User  Sts
  --- ---
  ___ Mailbox An  29 04/14/05 19:15:54 30 MAILBOX_AN 291803 RCB  Cmp
  ___ Mailbox An  28 04/14/05 07:15:45 00 MAILBOX_AN 291716 RCB  Cmp
  ___ Mailbox An  27 04/13/05 19:15:31 00 MAILBOX_AN 291663 RCB  Cmp
  ___ Mailbox An  26 04/13/05 07:15:21 00 MAILBOX_AN 291561 RCB  Cmp
  ___ Mailbox An  25 04/12/05 19:15:07 30 MAILBOX_AN 291511 RCB  Cmp
  ___ Mailbox An  24 04/12/05 07:15:54 30 MAILBOX_AN 291361 RCB  Cmp
  ___ Mailbox An  23 04/11/05 19:15:35 30 MAILBOX_AN 291304 RCB  Cmp
  ___ Mailbox An  22 04/11/05 07:15:23 50 MAILBOX_AN 291076 RCB  Cmp
  ___ Mailbox An  21 04/08/05 19:15:47 00 MAILBOX_AN 290733 RCB  Cmp
  ___ Mailbox An  20 04/08/05 07:15:38 50 MAILBOX_AN 290638 RCB  Cmp
  More...

F1=Help  F3=Exit  F4=Prompt  F12=Previous

The Supervisor®
  
```

The Batch Summary Display shows the history of all jobs executed using The Supervisor®. Jobs are sorted by batch date, in descending order.

- From this display you can
- View executed job information
 - View the batch detail log entries

Options

- 5 View batch detail logs.

Function Keys

- F1 Help
- F3 Exit program
- F4 Prompt for values
- F12 Close the subfile of data or exit the program

REFERENCE

HEADER
FIELDS

Application

The logs may be subset by an application by entering the application name or by pressing F4 and selecting an application. Leave blank to display all.

Batch Date

Enter a batch date to position to the jobs that were executed on or before a particular date.

Ending Severity

Enter the lowest severity to be displayed. All jobs with equal or greater severity will be displayed.

DETAIL
FIELDS

Opt

Enter an option here (see "Options").

App. Name

Name of application executed.

Batch#

The batch number for the executed job. Batch number sequence is dependent upon each application.

Date

The date the job was executed.

Time

The time the job was executed.

End Lv

The highest severity message logged during execution.

Job Name

The simple job name of the job from which this job was submitted. This is usually the name of the application. Jobs executed from the scheduler are prefixed with the letter "A".

Job Number

The job number of the job from which this job was submitted.

User

The name of the user who submitted this job.

Sts (Act, Cmp)

The status of the job. If the job is running, the status is "Act" (Active). If the job is complete, the status is "Cmp" (Complete).

Batch Detail Display

```

4/14/05                               Batch Detail Display                               R00AAR002

Application: Mailbox Analyzer             Status: Complete
Batch #: 2                               Severity: 00 (00 Selects All)
                                           ** ASCENDING SEQUENCE **

Sev Text
00 Batch 000000002 started on 2005-04-04 at 17:09:47.
00 ***** Begin Processing Parameter Set #00001 *****
00 Library EDI52DTAT added to the library List.
00 Call to program A04MBAPG10 completed normally.
50 Mailbox# M0352580 2003-02-27 Partner 08000 Document 820 is in RCV      +
50 Mailbox# M0448445 2004-04-22 Partner IBM Document 000 is in RCV status.
50 Mailbox# M0449851 2004-04-30 Partner RPS Document 215 is in T/F status.
50 Mailbox# M0469899 2004-08-10 Partner 22400 Document 864 received.
50 Mailbox# M0469899 2004-08-10 Partner 22400 Document 864 is in T/G      +
50 Mailbox# M0490272 2004-10-20 Partner UPS Document 824 received.
50 Mailbox# M0490272 2004-10-20 Partner UPS Document 824 is in RCV status.
50 Mailbox# M0492509 2004-10-26 Partner 22400 Document 864 received.

More...
F1=Help  F3=Exit  F4=Prompt  F9=Chg Sequence  F11=More Text  F12=Previous

The Supervisor®
  
```

The Batch Detail Display shows the detail log entries for a particular batch. Jobs are sorted chronologically.

From this display you can

- View the batch detail log entries

Function Keys

F1 Help

F3 Exit program

F4 Prompt for values

F9 Toggle sort sequence by chronological order and reverse chronological order

F11 Unfold for more log entry detail

F12 Close the subfile of data or exit the program

REFERENCE

HEADER
FIELDS

Application
Enter the application name or press F4 and select an application.

Status (Active, Complete)
Status of job.

Batch #
Enter the batch number of the particular job.

Severity
Enter the lowest severity to be displayed. All log entries with equal or greater severity will be displayed.

DETAIL
FIELDS

Sev
The severity of the message logged during execution.

Text
Message text.

UNFOLDED
DETAIL
FIELDS

Message #
The number of the message logged. See Message Master Maintenance to maintain message text and severity.

Program
The name of the program that logged the message.

EDI Trans #
The transaction number. Only applies to jobs that can contain multiple transactions in a single batch (like EDI).

Mailbox Analyzer Setup

```

4/14/05                               Mailbox Analyzers                               R04AAR002

Position to Mailbox Analyzer: _____

Type options, press Enter.
  2=Change 3=Copy 4=Delete 5=Setup

Mailbox
Opt Analyzer  Description                               TrustedLink
db library  Default Status
-----
1  DEFAULT    Default Mailbox Analyzer                         EDI4XXDTA
                                                Y          A

Bottom

F1=Help  F3=Exit  F6=Create  F12=Previous

The Supervisor®
MA a MW 10/002
  
```

A Mailbox Analyzer specifies the types of mailbox analysis you want done and the location of the mailbox you want to analyze. Therefore, analysis of two mailboxes, each in their own libraries, requires two mailbox analyzers. The Mailbox Analyzer screen displays all mailbox analyzers.

From this display you can

- View mailbox analyzer information
- Create mailbox analyzers
- Change mailbox analyzer information
- Delete mailbox analyzers
- Set up mailbox analyzers

Options

- 2 Change the description, mailbox library, default mailbox analyzer flag and the status flag.
- 3 Copy the values and setup information from an existing mailbox analyzer and create a new mailbox analyzer.

REFERENCE

- 4 Delete an existing mailbox analyzer.
- 5 View or change mailbox analyzer setup values for the selected mailbox analyzer.

Function Keys

- F1 Help
- F3 Exit program
- F6 Create new mailbox analyzer
- F12 Close the subfile of data or exit the program

HEADER
FIELDS
DETAIL
FIELDS

Position to Mailbox Analyzer

Type a portion of a mailbox analyzer's name to position to a mailbox analyzer.

Opt

Enter an option here (see "Options").

Mailbox Analyzer

Name of mailbox analyzer.

Description

Description of mailbox analyzer.

TrustedLink db library

The library where the mailbox exists. This is usually EDI4XXDTA. The library name will be validated for existence.

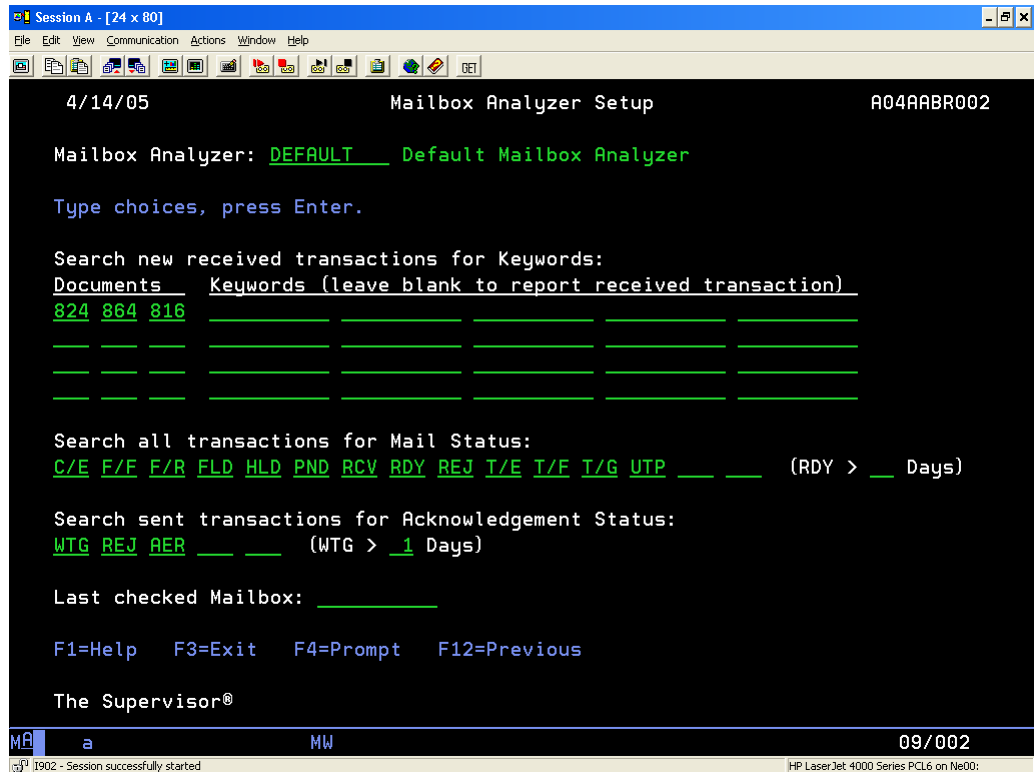
Default (Y, N)

Selects the default analyzer. During schedule entry, a mailbox analyzer may be selected to run. If no mailbox analyzer is selected then the default mailbox analyzer is run. Enter "Y" to select the default or "N" to deselect the default.

Status (A, I)

Activates or deactivates a mailbox analyzer. Enter "A" for active or "I" for inactive.

Mailbox Analyzer Setup



The Mailbox Analyzer Setup allows you to configure exactly what is searched for in the mailbox.

From this display you can

- View mailbox analyzer setup information
- Change mailbox analyzer setup information

Function Keys

- F1 Help
- F3 Exit program
- F4 Prompt for a list of values
- F7 Clear data from all fields
- F12 Close the subfile of data or exit the program

HEADER
FIELDS

Mailbox Analyzer
Enter a mailbox analyzer or press F4 for a list.

DETAIL
FIELDS

Search new received transactions for Keywords

You may wish to search for keywords in the in-bound transactions of certain documents or you may wish to be notified when these transactions are received. Examples of some keywords are "FAIL", "REJECT" and "MISSING". Enter the document(s) for which you wish transactions to be searched. Mailbox analyzer will scan the transactions for the keywords entered. If no keywords are entered then mailbox analyzer will report the receipt of the transaction(s).

To search for more than five keywords in a transaction for a particular document, re-enter the document on a following line and enter up to five more keywords.

Transactions checked = New

Search all transactions for Mail Status

If any sent or received transactions are found to be in one of the statuses entered while mailbox analyzer is analyzing, mailbox analyzer will report the find. A configuration or communications problem may cause a transaction to sit in RDY status and never get sent. Mailbox Analyzer can report these instances if you enter a value in the "(RDY > __ Days)" field.

Transactions checked = All

If you wish to prevent Mailbox Analyzer from reporting a transaction, enter the transaction number in the "Mailbox Do-not-check List".

Search sent transactions for Acknowledgement Status

If any sent transactions are found to have an acknowledgement status of one of the statuses entered while mailbox analyzer is analyzing, mailbox analyzer will report the find. A configuration or communications problem may cause a transaction to sit in WTG status. Mailbox Analyzer can report these instances if you enter a value in the "(WTG > __ Days)" field.

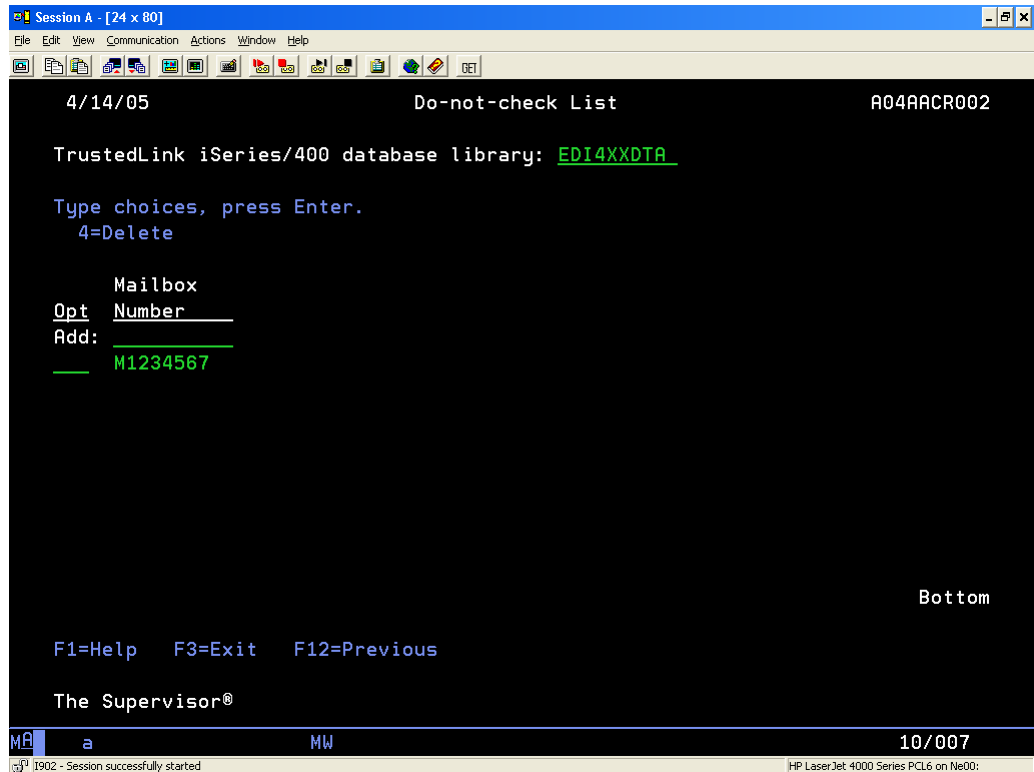
Transactions checked = All

If you wish to prevent Mailbox Analyzer from reporting a transaction, enter the transaction number in the "Mailbox Do-not-check List".

Last checked Mailbox

If you would like Mailbox Analyzer to skip all existing transactions, enter the last mailbox # here. Mailbox Analyzer will keep track of the last checked mailbox in order to determine which mailbox to analyze during its next run. If you would like Mailbox Analyzer to check all mailboxes on the next run, remove the mailbox number.

Do-not-check List



The do-not-check list allows you to prevent Mailbox Analyzer from analyzing certain transactions. An example of this is when a transaction had not been acknowledged and you no longer wish to receive notifications about the unacknowledged transaction.

From this display you can

- View mailboxes in the do-not-check list
- Add mailboxes to the do-not-check list.
- Remove mailboxes from the do-not-check list.

Options

- 4 Removes a mailbox from the do-not-check list.

Function Keys

- F1 Help
- F3 Exit program
- F4 Prompt for a list of libraries
- F12 Close the subfile of data or exit the program

REFERENCE

HEADER
FIELDS

TrustedLink iSeries/400 database library
Enter a library that contains the mailboxes or press F4 for a list.

DETAIL
FIELDS

Mailbox Number
Enter the mailbox number and press enter to add to the do-not-check list. The list of mailboxes will automatically position itself to that mailbox.

Application Program Setup

This option is only available in the full version of Mailbox Analyzer™ and is not available in Mailbox Analyzer™ *Signature*.

Application Parameters Setup

This option is only available in the full version of Mailbox Analyzer™ and is not available in Mailbox Analyzer™ *Signature*.

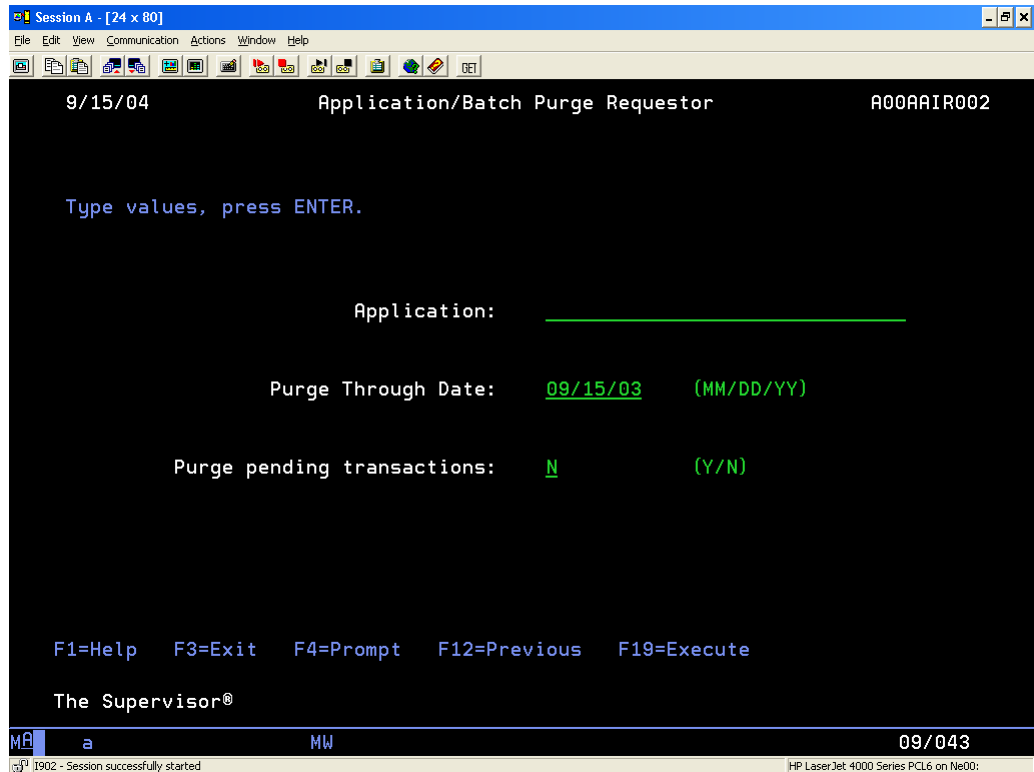
Application Program Setup

This option is only available in the full version of Mailbox Analyzer™ and is not available in Mailbox Analyzer™ *Signature*.

Message Master Maintenance

This option is only available in the full version of Mailbox Analyzer™ and is not available in Mailbox Analyzer™ *Signature*.

Batch Purge Requestor



The Application/Batch Purge Requestor allows you to purge by application. Each application has its own set of data to purge. A purge of an application does the following.

1. Electronic data applications will purge their own data plus any transaction message logs from The Supervisor®.
2. Purge The Supervisor® batch logs for the selected application. The purge of the batch log will take place only if all transaction message logs have already been purged.

From this display you can

- Purge by application through selected date

Function Keys

- F1 Help
- F3 Exit program
- F4 Prompt for values
- F12 Close the subfile of data or exit the program

REFERENCE

F19 Execute the purge

F I E L D S

Application

The application to be purged must be entered. Press F4 to select an application from a list.

Purge Through Date

All data will be purged up to the date entered.

Purge pending transactions (Y, N)

This field is used by applications that log transaction-specific messages. If a "Y" is entered, the transaction is purged whether it has or has not completed processing. If an "N" is entered, pending transaction message logs are left alone.

Calling Mailbox Analyzer from other applications

It's easy to call Mailbox Analyzer from another application. Just enter the following command from a command line or in your CL application:

```
CALL PGM(A00APIPG01) PARM('<Application Code>' '<Mailbox Analyzer>')
```

Where the parameters are defined as follows:

Parameter	Description	Value
Application Code	Mailbox Analyzer Signature does not support other applications, so the value will always be "A04".	A04
Mailbox Analyzer	Optionally enter the name of the Mailbox Analyzer to run. Leave blank to run the default mailbox analyzer.	Go to your Mailbox Analyzer Setup to see a list of mailbox analyzers.



Special Notices

This publication is intended for the customer licensing the software and may not be duplicated in any form for distribution or sales to entities that are not licensing the software from EDI Pros, Inc.

MAILBOX ANALYZER™ is a trademark of EDI Pros, Inc.

THE SUPERVISOR® is a registered trademark of EDI Pros, Inc.

IBM® is a registered trademark of the International Business Machines Corporation of the United States and/or other countries.